

DEC. 31,  
2007

# ABC SOAP

It's **MAKE-IT-OR-BREAK-IT**  
Time!



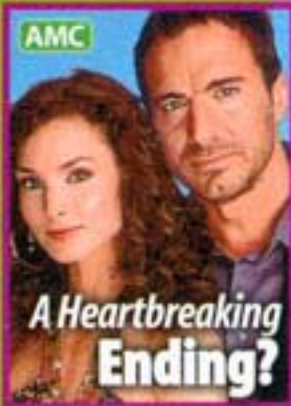
OLTL

A Sexy  
New  
Beginning?

IN DEPTH

GH SHAKE-UP!

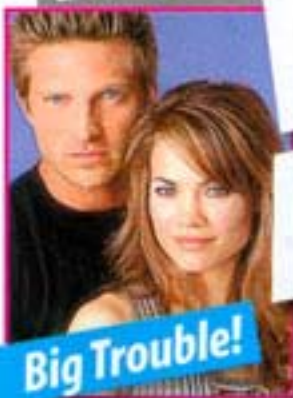
Georgie's  
Murdered!



AMC

A Heartbreaking  
Ending?

Who's  
Next?



Big Trouble!

Killer

# 2008

# PREVIEW!



Back On GH!



Surprise Return?



AMC

Bianca's  
Home!



GH

Mobster  
Out?

\$3.99

5 3 >



0 09128 46158 8  
DISPLAY DEC. 17 - DEC. 31

# The Off Duty Good-Bye Girl

Lindze Letherman's  
*GENERAL HOSPITAL*  
pals toss a party in  
her honor!

It wasn't just another day at work for *GENERAL HOSPITAL*'s Lindze Letherman (Georgie). This day, she was going to march from her lime-green dressing room, head up the stairs to the soundstage... and get strangled! If you think that was depressing for her, it was nothing compared to what was going on for her TV sis, Kirsten Storms (Maxie), who, for weeks, had planned a going-away party for Letherman. "It was a surprise party until Kirsten started stressing out about it," laughs Letherman. "We were shooting our last scenes together as sisters, and she was stressing out about them pretty



hardcore. Then, all of a sudden, I was like, 'Why are you stressing out so much?' She went, 'I'm throwing this surprise lunch for you, and I'm freaking out about it!'" Even though the cat was out of the bag, the sentiment was still loud and clear — Letherman was loved and

◀ Berman's brother, who owns a Santa Monica bakery called Vanilla Bake Shop, supplied extraordinary cupcakes for the festivities. "They were the best cupcakes I've had in my whole life," says Letherman. "They were unbelievably delicious."



▲ While posing with pals Berman and Storms, a smiley-faced Letherman said, "I'm on the show!" only for her smile to turn into a frown. "No, I'm off the show." When Storms was told of Letherman's imminent departure, she started to cry. "I told her, 'No! You're not allowed to do that!'" Letherman recalled.

PHOTOS THIS SPREAD BY JIM WALSH/IN

## SCENE&HEARD

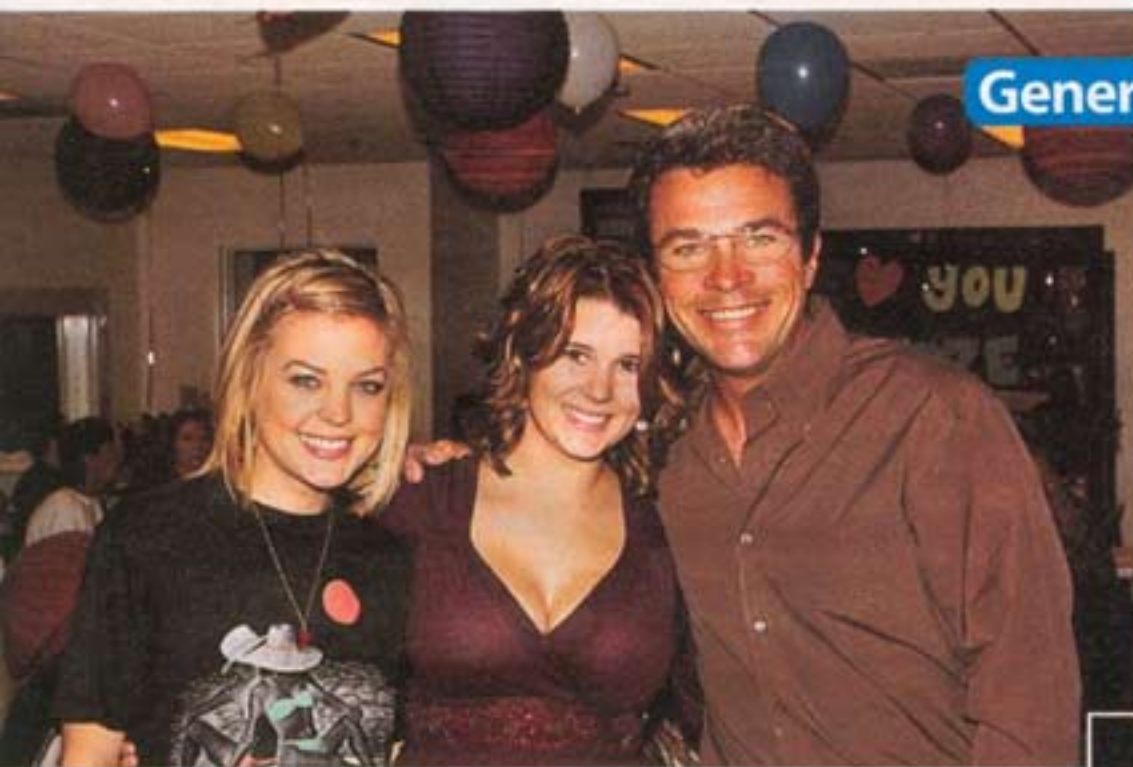
**When:** November 16

**Guests:** Letherman's nearest and dearest colleagues.

**Munchies:** Lots and lots of pizza... and even more cupcakes!

**Oddest "Parting Gift":** Forensic photos of Georgie's death scene.

## General Hospital



◀ Letherman posed one last time with her Scorpio family. "Kirsten is my sister. I have a very close relationship with her. And John [J. York, Mac], he's going to rip your heart out. I can promise you that."

"Jason [Gerhardt, Coop]... there's not a nicer guy in the world," Letherman says. "His daughter, Madyson, is the cutest little kid I've ever met. She's going to be a heartbreaker when she gets older. Just look at her mom and dad. Talk about a gene pool." ▶

Parting is such sweet sorrow — emphasis on the "sweet" — for Kelly Monaco (Sam), who found Letherman's bye-bye cupcakes finger-lickin' good. ▶



▲ "I started crying when I walked into the room," says Letherman, here with Brandon Barash (Johnny), Gerhardt, Berman and Storms. "What amazing people. I'm going to miss them."

would be missed. Her on-camera rival but off-camera friend, Julie Marie Berman (Lulu), sums it up nicely. "We're a big family here. It feels like a family



"I'm going to miss Greg," Letherman says of Vaughan (aka Lucky). "Greg was just amazing to me on that last day. He's always been like my big brother." ▲



member is going off to college and you have to get used to their room being empty and their presence being lost." But before that set in, they partied! ■